

Housatonic River Remediation Project

What is the Project?



Housatonic River Remediation Planning

The Housatonic River Remediation Project is currently in a planning and design phase. This project will ultimately result in removal of contaminated materials within the River and from floodplains from south of Pittsfield to the Rising Pond Dam. Following restoration, the River should be safe for recreational activities, fishing, and for general use.

Photo at left: Wet excavation of impacted sediment - Charles River, Medfield, MA

Project Roles



GE: Responsible for River clean up and dredging.



Town of Lenox: One of the communities where dredging will occur.



Arcadis: Design engineer for GE.

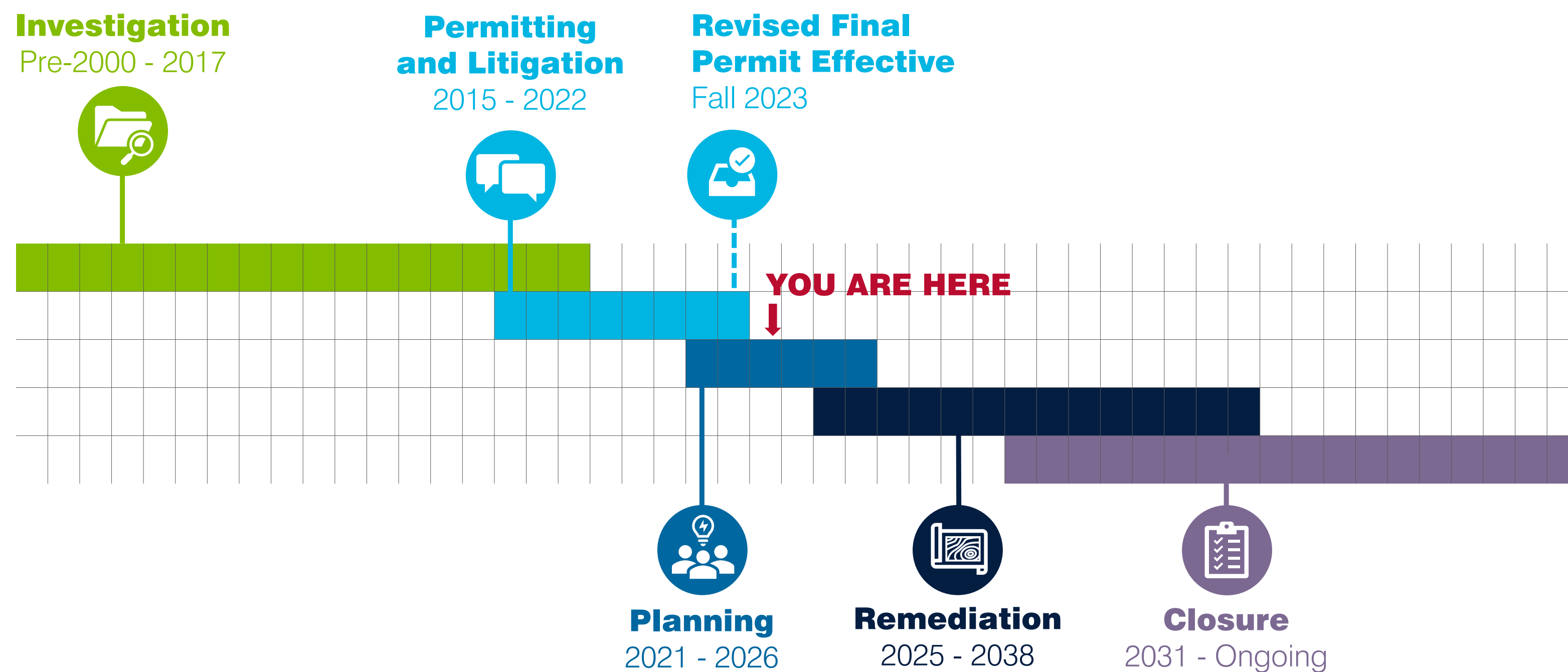


Weston & Sampson: Technical support to Town of Lenox for review of plans and offering comments to EPA on behalf of Town.

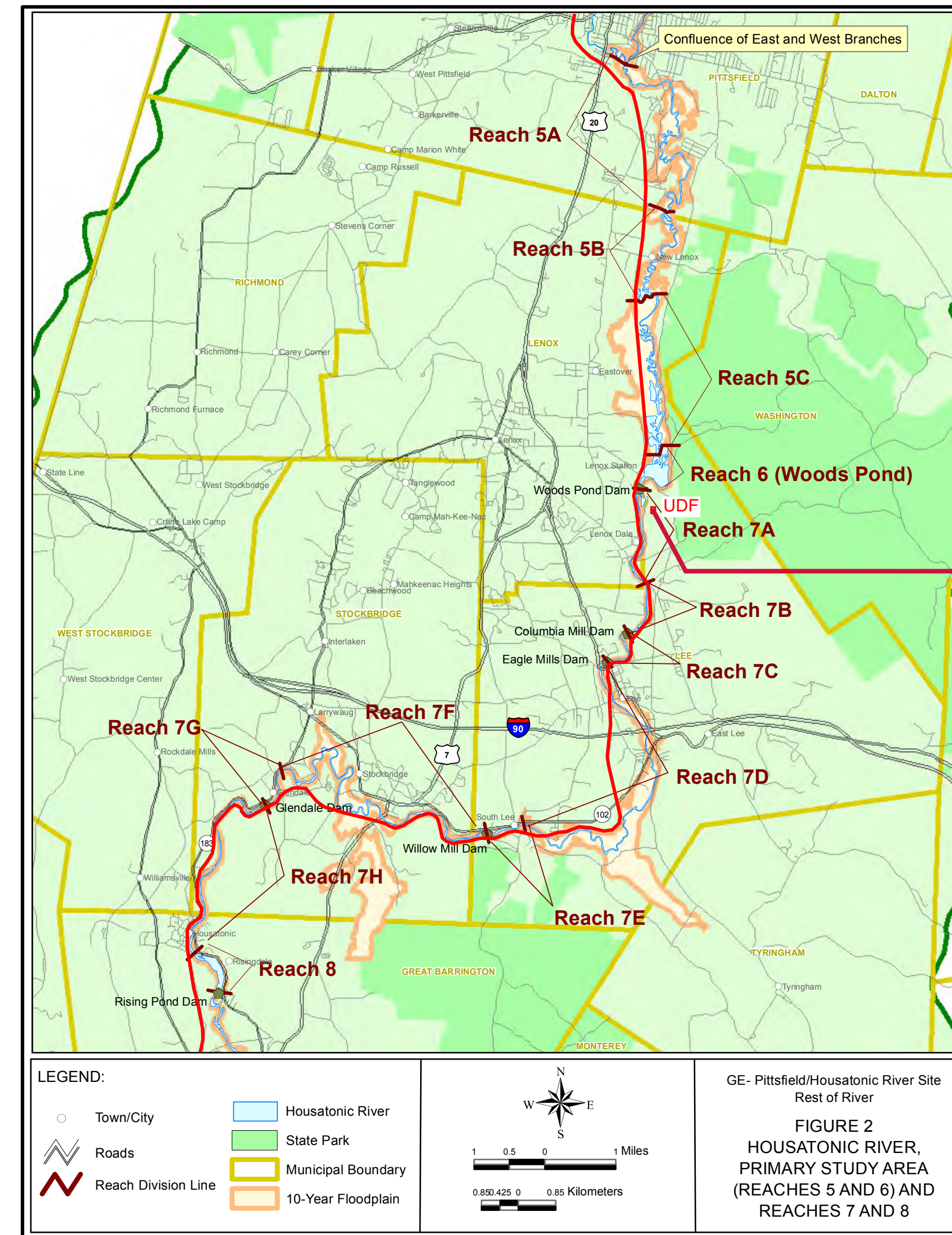


EPA: Regulatory Authority.

Schedule of Key Dates and Phases



Reach Locations with UDF



Construction of the UDF

The Upland Disposal Facility (UDF) is currently being planned and designed. Dredging will start after the UDF has been constructed. The UDF will be used for disposal of sediments containing <25 mg/kg total PCBs and not characterized as hazardous wastes.

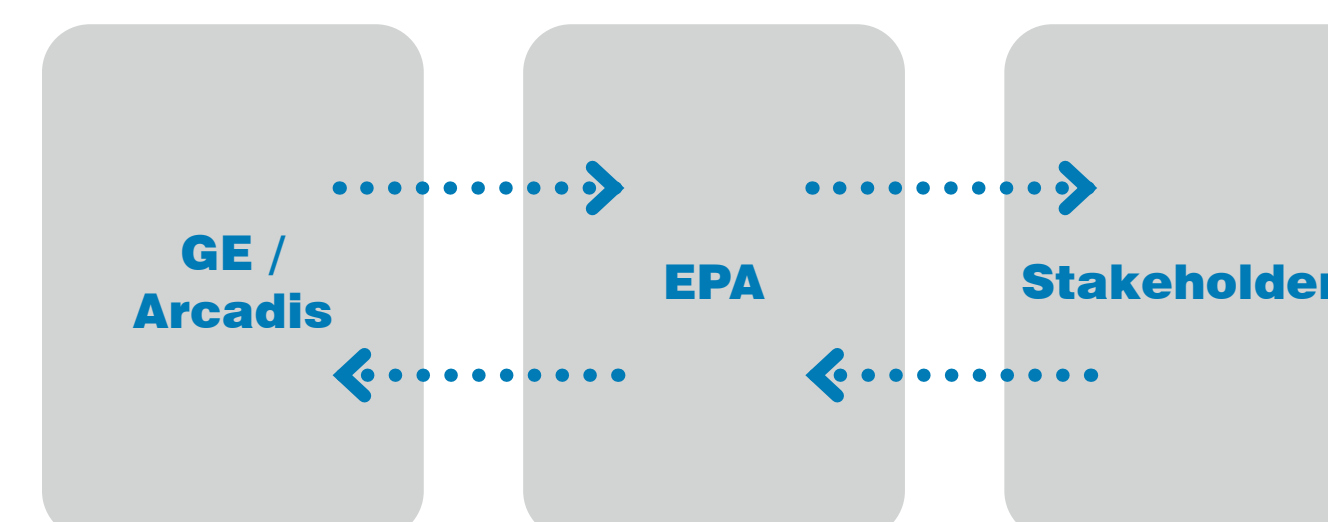
For more information, visit <https://www.epa.gov/ge-housatonic/rest-river-ge-pittsfieldhousatonic-river-site>

UDF and approximate location of the Housatonic Railroad



Photo above: Manchester Pond dredge

Next Steps for 2024

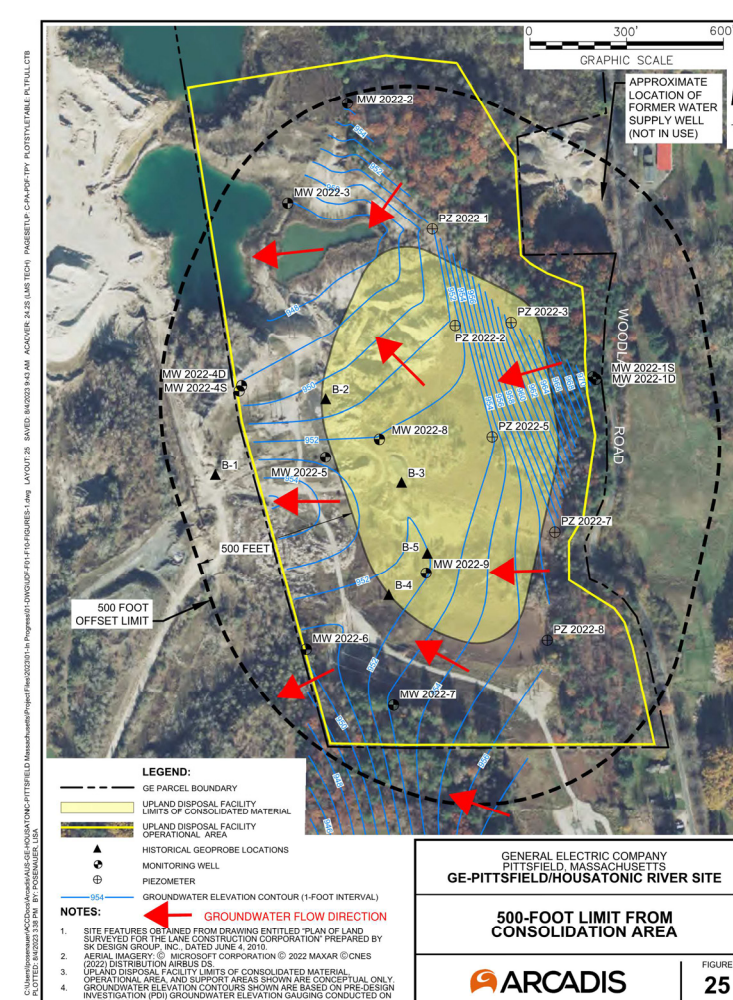
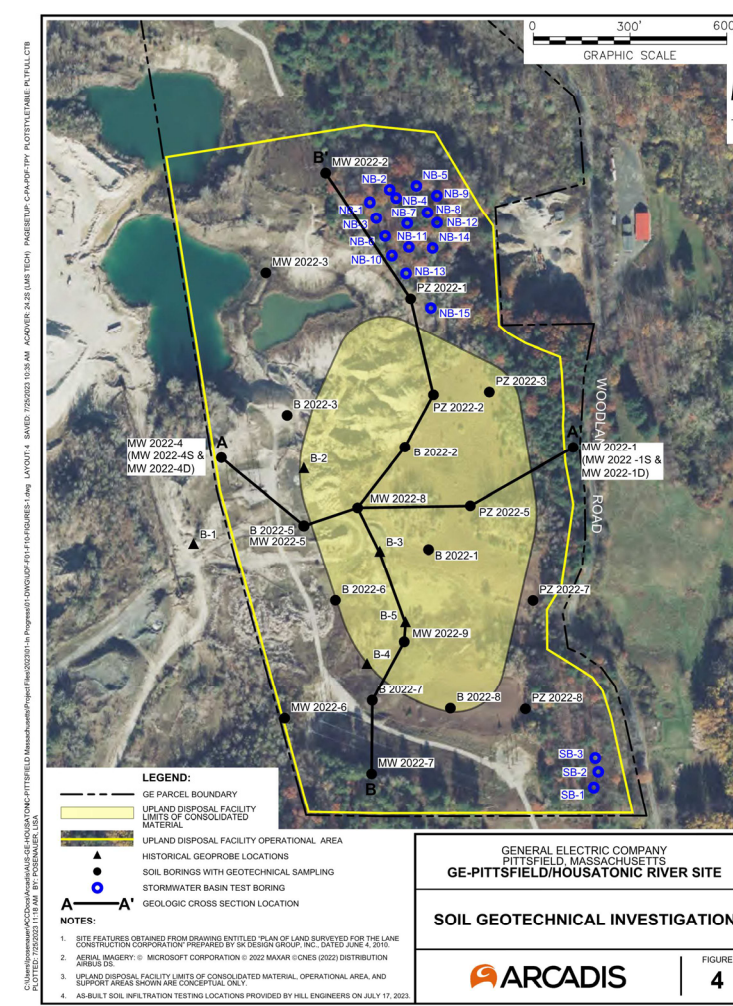
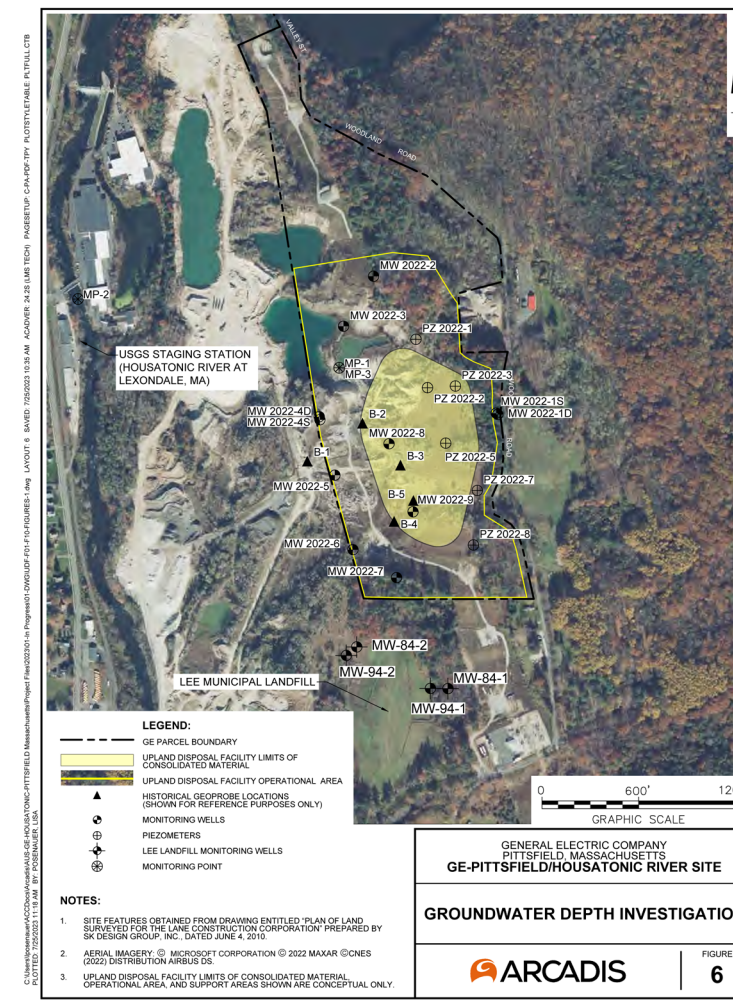
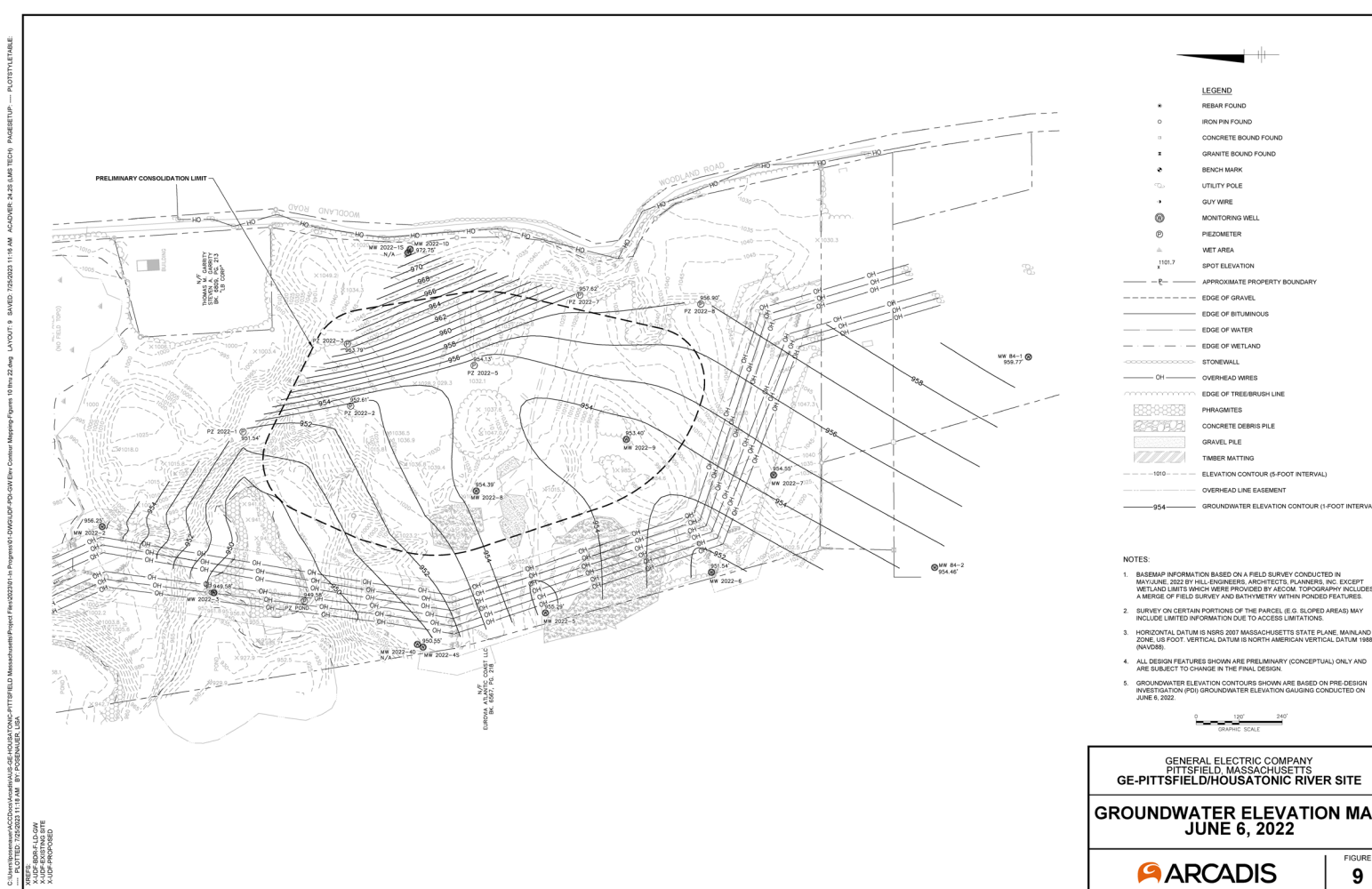
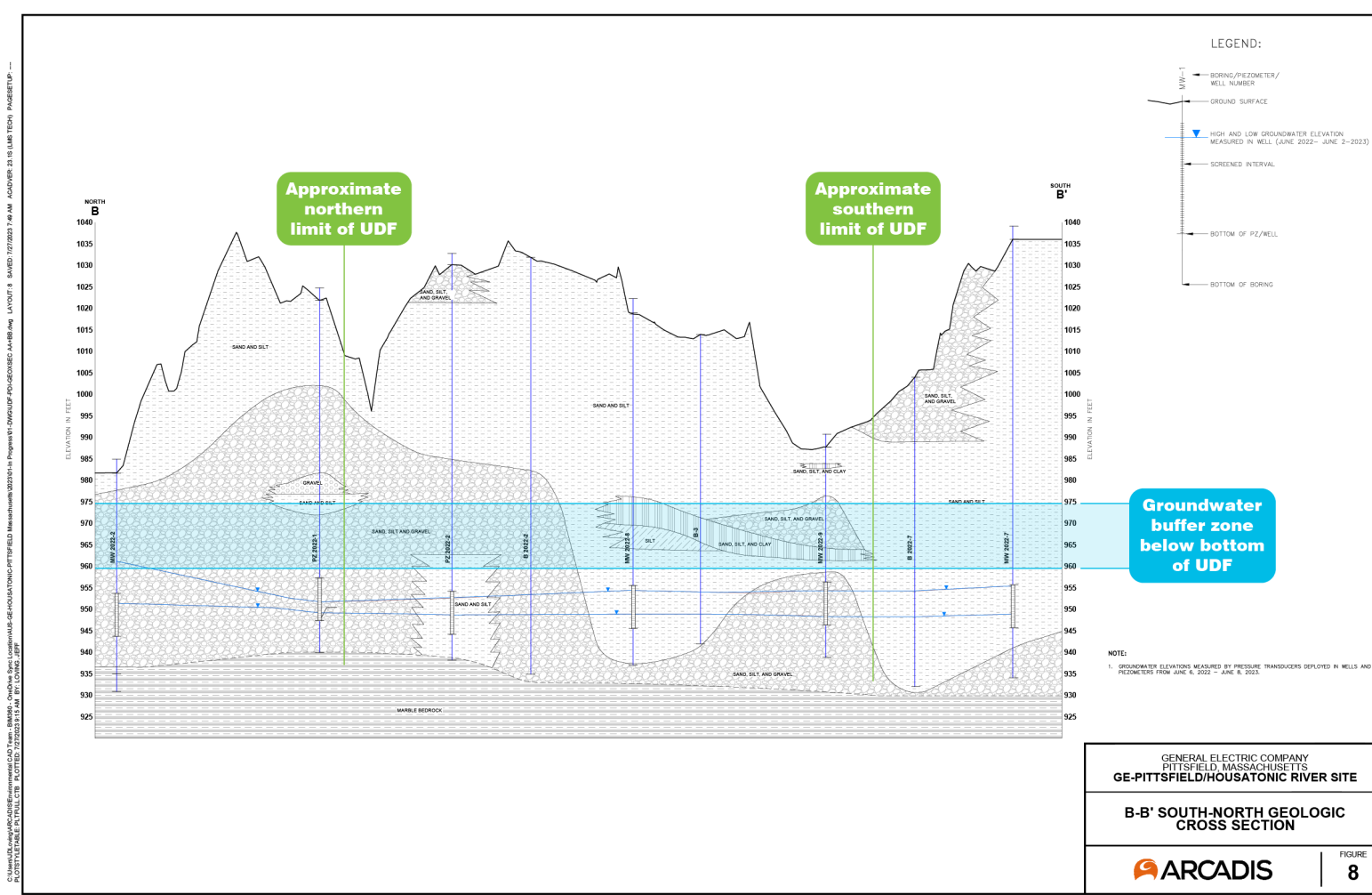
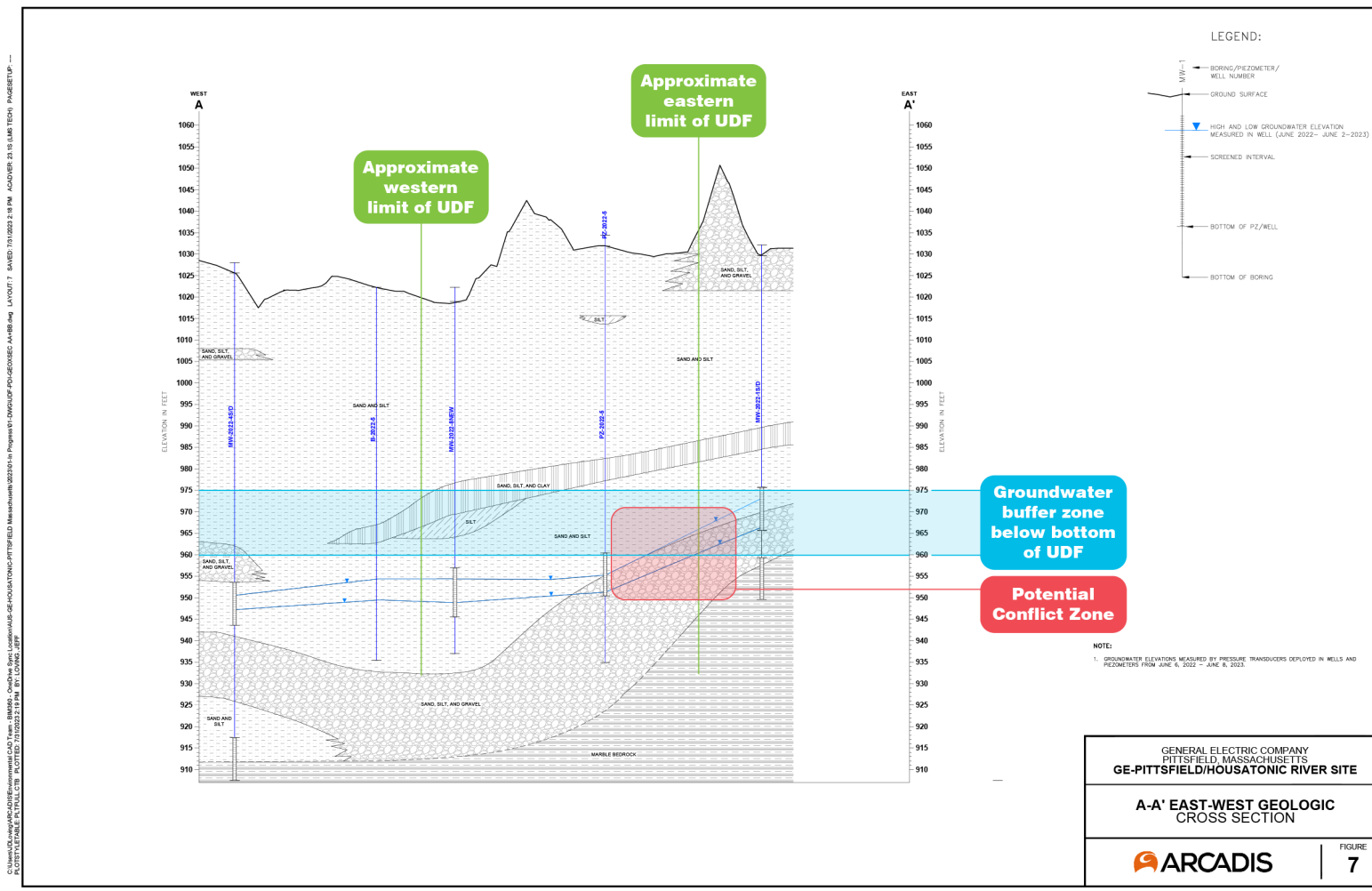


Planning work over the next year will include:

- GE & Arcadis preparing plans and designs to submit to EPA.
- EPA receives comments on GE plans from local communities including Lenox, compiles public comments with their own, and sends comments back to GE.
- Weston & Sampson will support Lenox with technical review/ comments.
- GE & Arcadis will revise designs based on EPA comments.

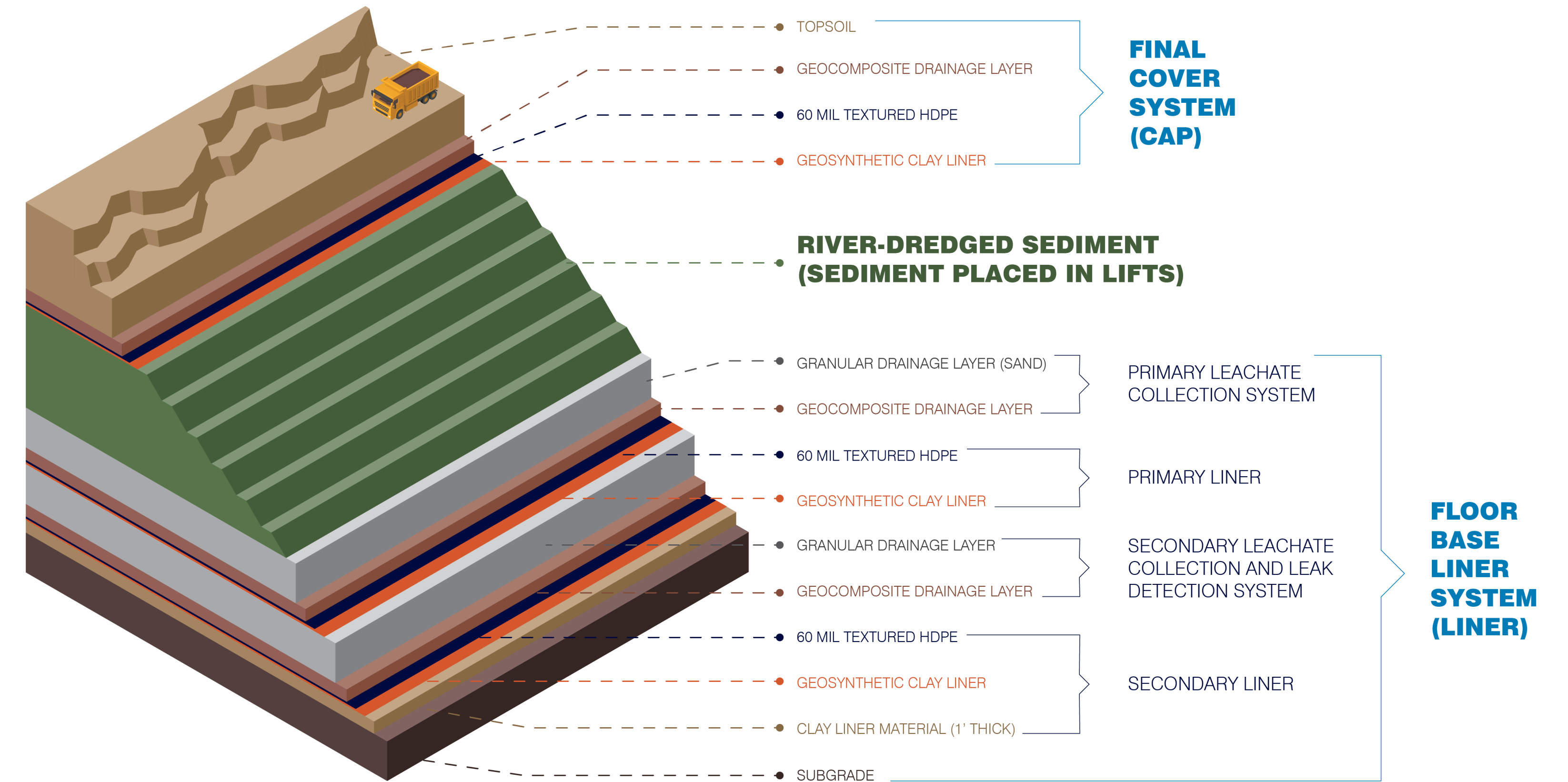
Housatonic River Remediation Project

Hydrogeology



Groundwater Investigation
Evaluation of seasonal high groundwater relative to bottom of UDF and groundwater configuration.

Landfill Structure



Landfill Capping Photos

